

A man with a beard, wearing a blue Bisley cap, sunglasses, a dark jacket with yellow accents, and khaki pants, stands on a snowy surface next to a red truck. The truck has a 'K' logo on the front and 'ROPS' on the side. The man is leaning against the open door of the truck.

# Bisley

WORKWEAR

**FOR BIG JOBS**  
**BELOW ZERO**

**2020 WORKWEAR**  
JACKETS, JUMPERS AND STRETCH PANTS



We are built to get the Job Done.

We are made to work as hard as you do.

We are as tough as the people who wear us and thrive in some of the toughest conditions in the world.

From the depths of mines to mountain tops, **Bisley Workwear** will always have the best workwear for the job.

**Big jobs don't stop below zero**, so we're expanding our range to include more **winter, wet weather**, and **safety jackets**, as well as our extremely comfortable **stretch pants**.

As with every new product, these garments were truly put to the test. We had five Snow Groomer mechanics from the Thredbo Repair workshop at Mount Kosciuszko wear test our products across a variety of jobs in sub-zero conditions.

They got the **Job Done**, will you?

**BUILT TO  
GET THE  
JOB DONE.**





JACKET **BJ6350HT**  
PANTS **BPC6476**







**Match your body measurements to the chart below to find your perfect size.**

- 

### Active: Slim Fit (Stretch Fabrications)

Size	XS	S	M	L	XL	2XL	3XL	4XL	5XL	6XL
To fit chest size (cm)	87	92	97	102	107	112	117	122	127	132
To fit chest size (inches)	34	36	38	40	42	44	46	48	50	52

Size REGULAR	72R	77R	82R	87R	92R	97R	102R	107R	112R	117R			
To fit waist size (cm)	72	77	82	87	92	97	102	107	112	117	122		
To fit waist size (inches)	28	30	32	34	36	38	40	42	44	46	48		
In-leg length (cm)	77	80	82	84	84	84	84	84	84	84	84		
Size STOUT				87S	92S	97S	102S	107S	112S	117S	122S	127S	132S
To fit waist size (cm)				87	92	97	102	107	112	117	122	127	132
To fit waist size (inches)				34	36	38	40	42	44	46	48	50	52
In-leg length (cm)				80	80	80	80	80	80	80	80	80	80
Size LONG	74L	79L	84L	89L	94L								
To fit waist size (cm)	74	79	84	89	94								
To fit waist size (inches)	29	31	33	35	37								
In-leg length (cm)	84	86	88	88	88								



# ICONS

To help you navigate the features of Bisley Workwear, this handy guide will explain the product features and benefits represented by each of our icons.

You will find these icons alongside the name of every product in this catalogue.

## VISIBILITY



### HIGH VISIBILITY MATERIAL

Bisley Safetywear High Visibility garments are developed to be seen in high-risk environments and protect you from work place hazards.

**AS/NZS 1906.4:2010**



### HI VIS DAY ONLY

Class D. Day only garments are developed to be worn during the day time only and never at night. Hi Vis colours are used to ensure you're seen in high-risk environments.

**AS/NZS 4602.1:2011**



### HI VIS DAY OR NIGHT

Class D/N. Day/Night garments are developed to be worn both during the day and also at night. Hi Vis colours accompanied with retroreflective taping offer maximum protection.

**AS/NZS 4602.1:2011**

## COMFORT



### X AIRFLOW™

Bisley's X Airflow™ Technology is based on a 3D cooling system, where the air flows through multiple ventilation points on the garment at key heat stress areas.



### BREATHABLE

Fabric is breathable or the garment is designed with ventilation.



### STRETCH

Built in stretch that allows greater ease of movement when working.



## PROTECTION



### SUN PROTECTION

The ultraviolet radiation transmitted through a fabric to the skin is measured and given a rating of 15 (min protection), 30 (good protection), 50, 50+ (excellent protection).

AS/NZS 4399:2017



### INDUSTRIAL STRENGTH

Reinforced stitching, bartacks, rivets and heavy duty fabrics mean Bisley Workwear products with this symbol have been developed for industrial environments or work places.



### STATIC CONTROL

Certain natural fibres do not attract static electricity (static neutral) and therefore reduce the risk of an electric shock to the body. 100% Cotton is the most common static control in garments.

AS/NZS 1020:1995



### COLD WEATHER

Garments designed to keep you warm in cold weather.



### SHOWERPROOF

Resistant to light rain. Fabric is either treated with an outer coat finish or a waterproof membrane is added to the reverse side of rainwear fabrics. Generally if a garment repels liquid on the outside and is not fully seam sealed on the inside, it is also categorised as showerproof.



### WATER RESISTANT

Water resistant membranes are often added to the reverse side of rainwear fabrics to ensure that no water can penetrate from outside, water resistant garments are fully seam sealed on the inside keeping you dry in wet weather.

AS 2001.2.18-1987



### BIOSCIENCE FRESCHÉ®

Fresche® microbial treatment is a highly effective approach to long term control and protection against the growth of bacteria and fungus which causes stubborn odours and stains. Fresche® is invisible when applied, it will not impact or change the colour or feel of the garment. Fresche® is derived from coconut oil a safe, sustainable and renewable resource.





JUMPER **BK6983**  
PANTS **BPC6028**



# JUMPERS & HOODIES



# BK6924

## 1/4 ZIP WORK FLEECE PULLOVER WITH SHERPA LINING



### FEATURES

- / Premium low-pill polyester fleece outer with sherpa-fleece body lining for warmth and pongee sleeves for comfort
- / 1/4 zip pullover style jumper with two inseam hand-warmer pockets
- / Sleeve pocket with reinforced panels and lower back mobile phone pocket to keep phone secure while working
- / Elasticated rib knit hem and sleeve cuff with thumb opening

### COLOURS

Black (BBLK)  
Navy (BPCT)  
Charcoal (BCCG)

### SIZES

Modern Fit  
XS - 6XL

### FABRIC

100% Polyester Fleece 300gsm  
100% Polyester Sherpa 270gsm  
100% Polyester Pongee 107gsm  
Polyester/Cotton 2x2 Rib Knit





**BK6925****ZIP-FRONT WORK FLEECE HOODIE WITH SHERPA LINING****FEATURES**

- / Premium low-pill polyester fleece outer with sherpa-fleece body lining for warmth and pongee sleeves for comfort
- / Hoodie style jumper with shaped hood and adjustable toggle
- / Two inseam hand-warmer pockets
- / Sleeve pocket with reinforced panels and lower back mobile phone pocket to keep phone secure while working
- / Elasticated rib knit hem and sleeve cuff with thumb opening

**COLOURS**

Black (BBLK)  
Navy (BPCT)  
Charcoal (BCCG)

**SIZES**

Modern Fit  
XS - 6XL

**FABRIC**

100% Polyester Fleece 300gsm  
100% Polyester Sherpa 270gsm  
100% Polyester Pongee 107gsm  
Polyester/Cotton 2x2 Rib Knit





# BK6987T

## TAPED HI VIS 1/4 ZIP FLEECE PULLOVER WITH SHERPA LINING



### FEATURES

- / Premium low-pill polyester fleece outer with sherpa-fleece body lining for warmth and pongee sleeves for comfort
- / Stretch reflective tape in hoop pattern for day/night visibility
- / 1/4 zip pullover style jumper
- / Elasticated rib knit hem and sleeve cuff with thumb opening

### COLOURS

Yellow/Navy (TT04)  
Orange/Navy (TT05)

### SIZES

Modern Fit  
XS - 6XL

### FABRIC

100% Polyester Fleece 300gsm  
100% Polyester Sherpa 270gsm  
100% Polyester Pongee 107gsm  
Polyester/Cotton 2x2 Rib Knit



Sherpa-fleece body lining for warmth

1/4 zip pullover style

Premium polyester low-pill fleece



Stretch reflective tape in hoop pattern

Lined pongee sleeves

Rib cuffs with thumb opening



Elasticated rib knit hem and cuff



**BK6988T****TAPED HI VIS ZIP FRONT FLEECE HOODIE WITH SHERPA LINING****FEATURES**

- / Premium low-pill polyester fleece outer with sherpa-fleece body lining for warmth and pongee sleeves for comfort
- / Stretch reflective tape in hoop pattern for day/night visibility
- / Full zip hoodie style jumper with internal rib collar for comfort when hood is down
- / Shaped lined hood with adjustable toggles
- / Contrast kangaroo style shaped front pockets
- / Elasticated rib knit hem and sleeve cuff with thumb opening

**COLOURS**

Yellow/Navy (TT04)  
Orange/Navy (TT05)

**SIZES**

Modern Fit  
XS - 6XL

**FABRIC**

100% Polyester Fleece 300gsm  
100% Polyester Sherpa 270gsm  
100% Polyester Pongee 107gsm  
Polyester/Cotton 2x2 Rib Knit



Internal rib collar for comfort when hood is down



Shaped hood with contrast internal lining and adjustable toggles

Premium polyester low-pill fleece

Sherpa-fleece body lining for warmth

Lined pongee sleeves

Stretch reflective tape in hoop pattern

Contrast kangaroo style shaped front pockets

Rib cuffs with thumb opening



Elasticated rib knit hem and cuff









**BK6983** | **FLX & MOVE™ MARLE FLEECE HOODIE JUMPER**



**FEATURES**

- / Premium ultra-soft marle fleece
- / Hoodie style jumper with shaped hood and adjustable toggle
- / Oversized front kangaroo pouch pocket
- / Two side mobile phone pockets
- / Half elastic sleeve cuff for comfort while working

**COLOURS**

- Grey Marle (BGGY)
- Charcoal Marle (BCCG)

**SIZES**

- Modern Fit
- XS - 6XL

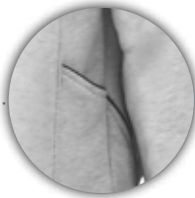
**FABRIC**

65% Cotton, 35% Polyester TC Knit Laminated with Dual Colour Terry Fleece 360gsm



Terry fleece inner lining for comfort

Black reflective piping highlights



Two side mobile phone pockets



Shaped hood with adjustable toggle

Premium ultra-soft marle fleece

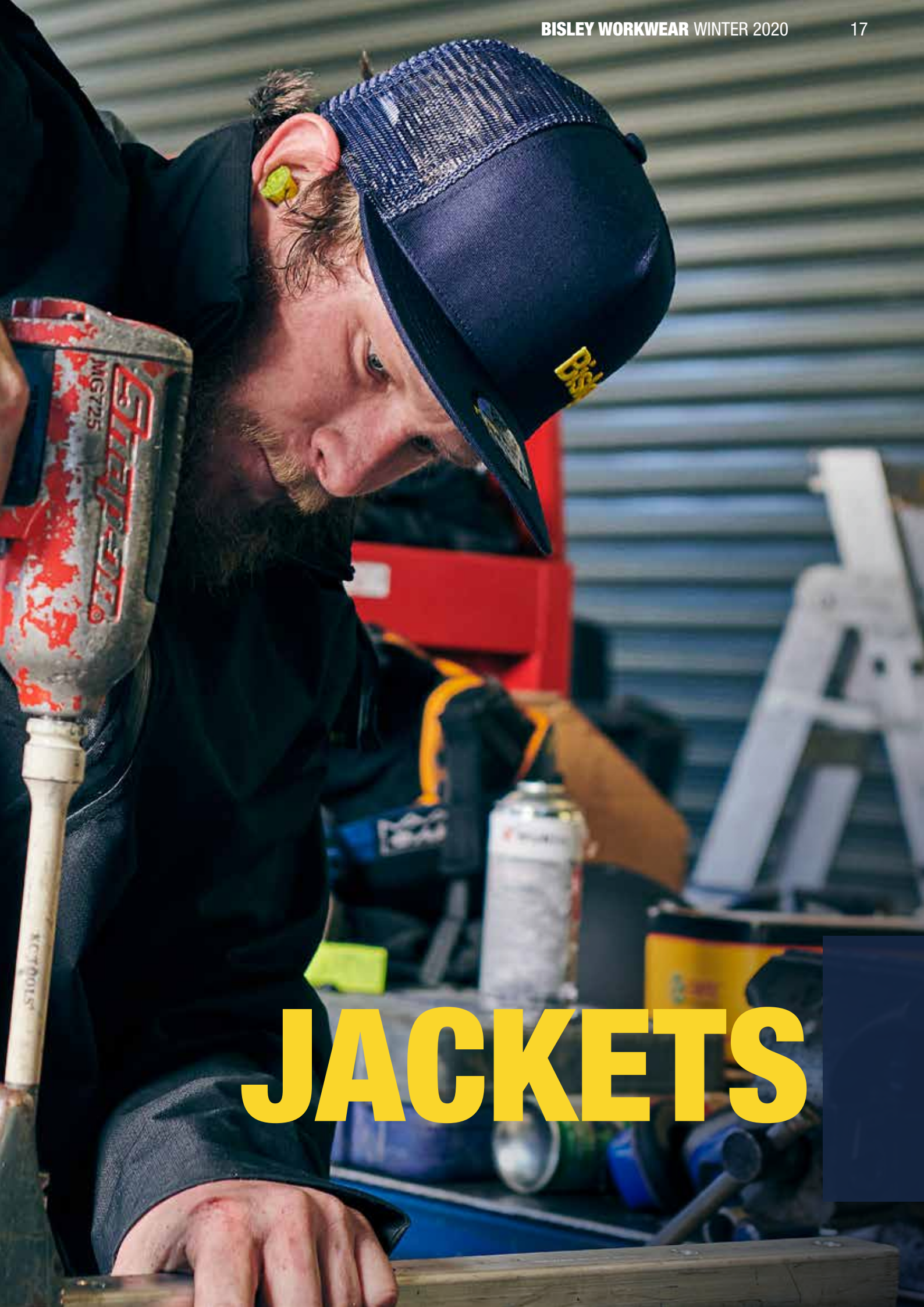
Oversized front kangaroo pouch pocket

Half elastic sleeve cuff









# JACKETS



## BJ6960

### PREMIUM SOFT SHELL BOMBER JACKET



#### FEATURES

- / Fabric waterproof rating: Up to 10,000mm H<sub>2</sub>O, showerproof garment
- / Chest pocket for cards and identification
- / Stand collar with chin guard for protection
- / Heat sealed waterproof zips
- / Elasticated rib knit hem and sleeve cuff to retain warmth

#### COLOURS

Black (BBLK)  
Navy (BPCT)

#### SIZES

Modern Fit  
XS - 6XL

#### FABRIC

76% Nylon, 24% Spandex Bonded with TPU Membrane and 144F Fleece 320gsm  
**Front Lining:** 100% Polyester Mesh 75gsm  
Polyester/Cotton 2x2 Rib Knit



Chin guard to protect your neck and chin

Water resistant fabric with breathable membrane

Heat sealed waterproof zip chest pocket for cards and identification



Elasticated rib knit hem and sleeve cuff to retain warmth

#### FABRIC WATERPROOF RATING:

Up to  
10,000mm  
H<sub>2</sub>O





JACKET **BJ6960**  
PANTS **BPC6008T**







**BJ6979T****TAPED HI VIS SOFT SHELL BOMBER JACKET****FEATURES**

- / Segmented reflective tape in hoop pattern around body with biomotion configuration on sleeves for optimal day/night visibility
- / Fabric waterproof rating: Up to 10,000mm H<sub>2</sub>O, showerproof garment
- / Bonded internal fleece and velour lining for warmth
- / Chest pocket for cards and identification
- / Two waist pockets with waterproof zippers
- / Elasticated rib-knit hem and sleeve cuff to retain warmth

**COLOURS**

Yellow (BF51)  
Orange (BF61)

**SIZES**

Modern Fit  
XS - 6XL

**FABRIC**

100% Polyester 75D Mechanical Stretch Bonded with 144F Fleece and TPU Membrane 300gsm  
**Body Lining:** 100% Polyester Velour 140gsm  
Polyester/Cotton 2x2 Rib Knit



Chin guard to protect your neck and chin

Bonded internal fleece and velour lining for warmth

Water resistant fabric with breathable membrane

Chest pocket for easy access to cards and identification

Segmented reflective tape in hoop pattern around body with biomotion configuration on sleeves for day/night visibility

Two waist pockets with waterproof zipper



Elasticated rib-knit hem and sleeve cuff to retain warmth

**FABRIC  
WATERPROOF  
RATING:**

Up to  
10,000mm  
H<sub>2</sub>O





JACKET **BJ6350HT**  
PANTS **BPC6476**



**BJ6350HT****TAPED HI VIS REVERSIBLE PUFFER JACKET****FEATURES**

- / Reflective tape in "H" pattern around body with biomotion configuration on sleeves for optimal day/night visibility
- / Fabric waterproof rating: Up to 15,000mm H<sub>2</sub>O, fully seam sealed waterproof garment
- / Internally quilted with polyester wadding and lined with taffeta
- / Reversible jacket style for multi wear on site and offsite. Reverse side is plain black
- / Multi-functional pockets including hidden in-seam pockets on hi vis side and hand-warmer pockets on reverse
- / Embroidery zip opening for double sided branding

**COLOURS**

Yellow (BF51)  
Orange (BF61)

**SIZES**

Modern Fit  
XS - 6XL

**FABRIC**

100% Polyester Oxford Fabric with PU Coating 180gsm  
100% Nylon Taffeta 38gsm  
100% Polyester Wadding 160gsm



Internally quilted with polyester wadding for extra warmth

Embroidery zip opening for double sided branding

Reflective tape in "H" pattern around body

Biomotion tape configuration on sleeves

Reverse Side



Heavy duty two way zipper front opening

Fully seam sealed waterproof outer shell garment

Hand-warmer pockets on the reverse side

Two front waist inseam pockets on main side and waist welt

**FABRIC  
WATERPROOF  
RATING:**

Up to  
15,000mm  
H<sub>2</sub>O







JACKET **BJ6350HT**  
PANTS **BPC6476**







## BJ6730 | TWO TONE HI VIS BOMBER JACKET



### FEATURES

- / Fabric waterproof rating: Up to 20,000mm H<sub>2</sub>O, waterproof garment
- / Quilted with polyester wadding for warmth
- / Ribbed neck band, cuffs, and hem to retain warmth
- / Two inseam hand-warmer pockets

### COLOURS

Yellow/Navy (TT04)  
Orange/Navy (TT05)

### SIZES

Modern Fit  
XS - 6XL

### FABRIC

100% Polyester Oxford fabric with PU Coating 180gsm  
100% Polyester Lining 120gsm  
100% Polyester Wadding 160gsm  
Polyester/Cotton 2x2 Rib Knit



Ribbed neck band, cuffs and hem

Two pen pockets on left hand side sleeve

Quilted with polyester wadding for warmth



Waterproof outer shell fabric,  
fully seam sealed

Two inseam hand-warmer pockets

Ribbed hem and sleeve cuffs  
to retain warmth

### FABRIC WATERPROOF RATING:

Up to  
20,000mm  
H<sub>2</sub>O



**BJ6730T**

**TAPED TWO TONE HI VIS BOMBER JACKET  
WITH PADDED LINING**



**FEATURES**

- / Reflective tape in hoop pattern around body with biomotion configuration on sleeves and over shoulder strip for optimal day/night visibility
- / Fabric waterproof rating: Up to 20,000mm H<sub>2</sub>O, waterproof garment
- / Quilted with polyester wadding for warmth
- / Ribbed neck band, cuffs, and hem to retain warmth
- / Two inseam hand-warmer pockets

**COLOURS**

- Yellow/Navy (TT04)
- Orange/Navy (TT05)

**SIZES**

- Modern Fit
- XS - 6XL

**FABRIC**

- 100% Polyester Oxford Fabric with PU Coating 180gsm
- 100% Polyester Lining 120gsm
- 100% Polyester Wadding 160gsm
- Polyester/Cotton 2x2 Rib Knit



Ribbed neck band, cuffs and hem

Waterproof outer shell fabric, fully seam sealed

Two pen pockets on left hand side sleeve

Reflective tape in hoop pattern around body with biomotion configuration on sleeves

Quilted with polyester wadding for extra warmth

Two inseam hand-warmer pockets



Ribbed hem and sleeve cuffs to retain warmth

**FABRIC  
WATERPROOF  
RATING:**  
Up to  
20,000mm  
H<sub>2</sub>O







**BJ6976****QUILTED BOMBER JACKET****FEATURES**

- / Diamond stitch design quilted polyester wadding with sherpa-fleece body lining for warmth and lined taffeta sleeves for comfort
- / Chin guard zip stopper to protect your neck and chin
- / Multi-functional zip pockets incl. internal mobile phone pocket
- / Elasticated rib knit hem and sleeve cuff

**COLOURS**

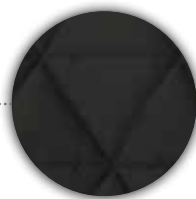
Black (BBLK)

**SIZES**Modern Fit  
XS - 6XL**FABRIC**100% Peach Finish Quilted Polyester with  
Down-like Polyester Filing 100gsm**Sleeve Lining:** 100% Polyester Taffeta 52gsm**Body Lining:** 100% Polyester Sherpa 270gsm  
Polyester/Cotton 2x2 Rib KnitChin guard zip stopper to  
protect your neck and chin

Internal left hand side chest mobile phone patch pocket

Super warm sherpa fleece body lining

Two side waist zip pockets

Diamond quilted outer with  
polyester wadding for extra warmth

Taffeta lined sleeves for warmth

Elasticated rib knit hem and sleeve cuff













# BJ6829T

## TAPED TWO TONE HI VIS PUFFER JACKET WITH STAND COLLAR



### FEATURES

- / Reflective tape in hoop pattern around body with biomotion configuration on sleeves for optimal day/night visibility
- / Fabric waterproof rating: Up to 13,400mm H<sub>2</sub>O, showerproof garment
- / Quilted with polyester wadding for extra warmth
- / Motorcycle jacket inspired engineered quilted padding with shaped back tail
- / Chin guard and wind stopper for protection
- / Two waist pockets with waterproof zippers

### COLOURS

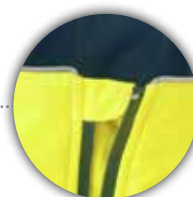
Yellow/Navy (TT04)  
Orange/Navy (TT05)

### SIZES

Modern Fit  
XS - 6XL

### FABRIC

100% Polyester Ripstop with TPU Coating 115gsn  
*Body Lining:* 100% Nylon 20D



Chin guard zip and wind stopper



Engineered quilted padding for a distinct look

Quilted with polyester wadding for extra warmth

Motorcycle jacket inspired engineered quilted padding

Reflective tape in hoop pattern around body with biomotion configuration on sleeves for optimal day/night visibility

Two layer showerproof fabric

Two waist pockets with waterproof zippers

Shaped back tail



**FABRIC  
WATERPROOF  
RATING:**  
Up to  
13,400mm  
H<sub>2</sub>O





JACKET **BJ6829T**  
PANTS **BPC6008T**



# BJ6943

## FLX & MOVE™ HEAVY DUTY WET WEATHER DOBBY JACKET



### FEATURES

- / Fabric waterproof rating: Up to 15,000mm H<sub>2</sub>O, fully seam sealed waterproof garment
- / Dual layer waterproof dobby fabric with internal wadding for warmth
- / Multi-functional waterproof zip pockets
- / Shaped built in hood with collar stand for protection when hood is down and adjustable cord for protection
- / Elasticated sleeve cuff adjuster

### COLOURS

Black (BBLK)

### SIZES

Modern Fit  
XS - 6XL

### FABRIC

100% Polyester Dobby with TPU Membrane Laminated  
100% Polyester Wadding 160gsm



**FLX & MOVE™**



Shaped built in hood with collar stand and adjustable cord for weather protection

Internal left hand side chest patch pocket

Lined body and sleeve with internal wadding

Two waist pockets with waterproof zips



Super durable dobby fabric

Two layer fully seam sealed waterproof garment

Elasticated sleeve cuff adjuster

### FABRIC WATERPROOF RATING:

Up to  
15,000mm  
H<sub>2</sub>O



JACKET **BJ6943**  
PANTS **BPC6476**









**BJ6937****FLX & MOVE™ SHIELD JACKET****FEATURES**

- / Fabric waterproof rating: Up to 10,000mm H<sub>2</sub>O, showerproof garment
- / Silver infrared thermal lined mesh body for warmth and taffeta lined sleeves for comfort
- / Multi-functional waterproof zip pockets incl. two hand-warmer pockets
- / Shaped built in hood with collar stand with adjustable cord for protection and chin guard zip stopper
- / Contrast abrasion resistance panels in high stress areas

**COLOURS**

Charcoal (BCCG)

**SIZES**Modern Fit  
XS - 6XL**FABRIC**

100% Polyester with TPU Membrane Fleece Laminate  
Bonded with Fleece 280gsm  
95% Polyester, 5% Spandex with TPU Coating 200gsm  
**Body Lining:** 100% Polyester Silver Mesh 130gsm  
**Sleeve Lining:** 100% Polyester Taffeta 50gsm



Shaped built in hood with collar stand and adjustable cord for weather protection



Chin guard  
zip stopper

Contrast abrasion patches

Bonded internal fleece

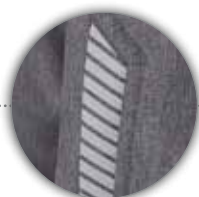
Waterproof zip pocket on right hand side chest

Two hand-warmer pockets

Silver infrared thermal lined mesh for warmth

Showerproof fabric with breathable membrane

Reflective trim accent  
for night visibility



Contoured shape 5 piece sleeves



**Bisley**  
WORKWEAR  
**FLX & MOVE™**

**FABRIC  
WATERPROOF  
RATING:**

Up to  
10,000mm  
H<sub>2</sub>O



JACKET **BJ6829T**  
PANTS **BP6008T**















# **STRETCH PANTS**



# Introducing New **Stre**

**Bisley Workwear garments are built to endure the toughest conditions you face while working.**

Our designs integrate exceptionally durable fabrics, the latest garment technologies, reinforced stitching, and innovative features.

These new stretch garments have been engineered to increase natural movement without compromising on durability, seam strength, or longevity.

**Seam Strength** ➡ Heavy Gauge Thread with Reinforced Stitching

**Movement** ➡ Stretch Fabric and Curved Waistbands

**Durability** ➡ Reinforced Knees and Durable Fabric

**Longevity** ➡ Engineered Fit to Reduce Strain on Seams and Fabrics

All to make Bisley Workwear the toughest workwear on site.

**STRETCH.  
HELPS YOU GET  
THE JOB DONE.**



# tch → Technology



**CURVED STRETCH  
WAISTBAND FOR COMFORT**



**CORDURA®  
REINFORCEMENTS IN  
HIGH FRICTION AREAS**



**LARGE MULTIFUNCTIONAL  
UTILITY CARGO POCKETS**



**HEAVY GAUGE THREAD  
FOR STRENGTH**



**DOUBLE KNEE FOR  
PROTECTION AND  
DURABILITY**



**DURABLE STRETCH  
COTTON FOR COMFORT,  
FLEXIBILITY AND  
DURABILITY**



**ELASTICATED BOOT CUFF  
TO PROTECT FROM SAND,  
SNOW, AND DIRT**



## BP6008 | STRETCH COTTON DRILL WORK PANTS



### FEATURES

- / Stretch mid-rise fit with curved waistband for comfort and movement
- / Slim straight leg with heavy gauge thread and reinforced stitching
- / Multi-functional side and back pockets
- / Job Done d-ring on belt loop to hold gloves and tools
- / UPF 50+ sun protection rating
- / Bisley exclusive Fresche® bacterial wash to prevent odour

### COLOURS

Black (BBLK)  
Navy (BPCT)  
Khaki (BCDR)  
Bottle (BGRG)

### SIZES

Modern Fit  
77 - 112R  
87 - 132S  
74 - 94L

### FABRIC

97% Cotton, 3% Elastane Cotton Drill 280gsm



Stretch mid-rise fit with curved waistband

Job Done branded d-ring on front right hand side belt loop

Two angled side pockets

Seven reinforced belt loops with YKK® zipper

Heavy gauge thread and reinforced stitching

Two back patch pockets

Coin pocket in waistband on the right hand side

Mobile phone welt pocket on back right hand side leg





**BP6008T****TAPED BIOMOTION STRETCH COTTON DRILL WORK PANTS****FEATURES**

- / Stretch reflective tape with biomotion configuration on upper and lower leg
- / Stretch mid-rise fit with curved waistband for comfort and movement
- / Slim straight leg with heavy gauge thread and reinforced stitching
- / Multi-functional side and back pockets
- / Job Done d-ring on belt loop to hold gloves and tools
- / Bisley exclusive Fresche® bacterial wash to prevent odour

**COLOURS**

Navy (BPCT)

**SIZES**

Modern Fit  
77 - 112R  
87 - 132S  
74 - 94L

**FABRIC**

97% Cotton, 3% Elastane Cotton Drill 280gsm













# BPC6008

## STRETCH COTTON DRILL CARGO PANTS



### FEATURES

- / Stretch mid-rise fit with curved waistband for comfort and movement
- / Slim straight leg with heavy gauge thread and reinforced stitching
- / Multi-functional pockets including utility pocket and cargo pocket
- / Job Done d-ring on belt loop to hold gloves and tools
- / Bisley exclusive Fresche® bacterial wash to prevent odour

### COLOURS

Black (BBLK)  
Navy (BPCT)  
Khaki (BCDR)  
Bottle (BGRG)

### SIZES

Modern Fit  
77 - 112R  
87 - 132S  
74 - 94L

### FABRIC

97% Cotton, 3% Elastane Cotton Drill 280gsm



Job Done branded d-ring on front right hand side belt loop



Stretch mid-rise fit with curved waistband

Cargo pocket with touch tape closure

Seven reinforced belt loops with YKK® zipper

Heavy gauge thread and reinforced stitching

Two back patch pockets

Coin pocket in waistband on the right hand side

Utility pocket on right side leg





JACKET **BJ6926**  
PANTS **BPC6008**







LEFT:  
JUMPER **BK6924**  
PANTS **BPC6008T**

RIGHT:  
JACKET **BJ6937**  
PANTS **BPC6008**



**BPC6008T****TAPED STRETCH COTTON DRILL CARGO PANTS****FEATURES**

- / Stretch reflective tape with biomotion configuration on upper and lower leg
- / Stretch mid-rise fit with curved waistband for comfort and movement
- / Slim straight leg with heavy gauge thread and reinforced stitching
- / Multi-functional pockets including utility pocket and cargo pocket
- / Bisley exclusive Fresche® bacterial wash to prevent odour

**COLOURS**

Navy (BPCT)

**SIZES**

Modern Fit  
77 - 112R  
87 - 132S  
74 - 94L

**FABRIC**

97% Cotton, 3% Elastane Cotton Drill 280gsm





## BPC6028

### STRETCH COTTON DRILL CARGO CUFFED PANTS



#### FEATURES

- / Stretch mid-rise fit with curved waistband for comfort and movement
- / Cuffed stovepipe style with heavy gauge thread and reinforced stitching
- / Multi-functional pockets including utility pocket and cargo pocket
- / Job Done d-ring on belt loop to hold gloves and tools
- / Bisley exclusive Fresche® bacterial wash to prevent odour

#### COLOURS

Black (BBLK)  
Navy (BPCT)  
Stone (BSTN)

#### SIZES

Active Fit  
77 - 112R  
87 - 132S

#### FABRIC

97% Cotton, 3% Elastane Cotton Drill 280gsm



Stretch mid-rise fit with curved waistband for comfort and movement

Job Done d-ring on belt loop to hold gloves and tools

Cargo pocket with touch tape closure

Heavy gauge thread and reinforced stitching

UPF 50+ sun protection rating

Cuffed stovepipe style for protection







JUMPER **BK6983**  
PANTS **BPC6028**





LEFT:  
JUMPER **BK6924**  
PANTS **BPC6008T**

RIGHT:  
JACKET **BJ6937**  
PANTS **BPC6008**



**BPC6028T****TAPED BIOMOTION STRETCH COTTON DRILL  
CARGO CUFFED PANTS****FEATURES**

- / Stretch reflective tape with biomotion configuration on upper and lower leg
- / Stretch mid-rise fit with curved waistband for comfort and movement
- / Cuffed stovepipe style with heavy gauge thread and reinforced stitching
- / Multi-functional pockets including utility pocket and cargo pocket
- / Job Done d-ring on belt loop to hold gloves and tools
- / Bisley exclusive Fresche® bacterial wash to prevent odour

**COLOURS**

Navy (BPCT)

**SIZES**

Modern Fit  
77 - 112R  
87 - 132S

**FABRIC**

97% Cotton, 3% Elastane Cotton Drill 280gsm



Coin pocket in waistband on the right hand side

Job Done branded d-ring on front right hand side belt loop

Two angled side pockets

YKK® zipper

Utility pocket



Seven reinforced belt loops

Two back patch pockets

Heavy gauge thread and reinforced stitching

Stretch reflective tape with biomotion configuration on upper and lower leg

Cuffed stovepipe style



# BPC6334

## FLX & MOVE™ STRETCH CARGO CUFFED PANTS



### FEATURES

- / Stretch mid-rise fit with curved waistband for comfort and movement
- / Cuffed stovepipe style with heavy gauge thread and reinforced stitching
- / Double layered knee for durability
- / Multi-functional pockets incl. two oversized cargo pockets with Cordura® reinforcements for durability

### COLOURS

Black (BBLK)  
Navy (BPCT)  
Stone (BSTN)  
Charcoal (BCCG)

### SIZES

Modern Fit  
72 - 112R  
87 - 117S

### FABRIC

97% Cotton, 3% Spandex Cotton Canvas 280gsm



Stretch mid-rise fit with curved waistband for comfort and movement

Job Done d-ring on belt loop to hold gloves and tools

YKK® zipper

Heavy gauge thread and reinforced stitching

Oversized cargo pockets with Cordura® reinforcements for durability

Stretch cotton canvas for comfort and flexibility



Double layered knee for durability

Cuffed stovepipe style





JACKET **BJ6937**





# BPC6334T

## FLX & MOVE™ TAPED STRETCH CARGO CUFFED PANTS



### FEATURES

- / Stretch reflective tape with biomotion configuration on upper and lower leg
- / Stretch mid-rise fit with curved waistband for comfort and movement
- / Cuffed stovepipe style with heavy gauge thread and reinforced stitching
- / Double layered knee for durability
- / Multi-functional pockets incl. two oversized cargo pockets with Cordura® reinforcements for durability

### COLOURS

Navy (BPCT)

### SIZES

Modern Fit  
72 - 112R  
87 - 117S

### FABRIC

97% Cotton, 3% Spandex Cotton Canvas 280gsm



Two angled side pockets

Stretch cotton canvas for extra comfort and movement

Cordura® highlights at high abrasive areas for extra durability

Double layered knee for durability



7 reinforced wider and stronger belt loops

Two back welt pockets

Heavy gauge thread and reinforced stitching

Mobile phone pouch on both sides

Two oversized cargo pockets with Cordura® reinforcements for durability

Stretch reflective tape with biomotion configuration on upper and lower leg

Cuffed stovepipe style





**BPC6335****FLX & MOVE™ STRETCH DENIM CARGO CUFFED PANTS****FEATURES**

- / Durable stretch knit denim terry for superior comfort and movement
- / Stretch mid-rise fit with curved waistband for comfort and movement
- / Cuffed stovepipe style with heavy gauge thread and reinforced stitching
- / Double layered knee for durability
- / Multi-functional pockets incl. two oversized cargo pockets with Cordura® reinforcements for durability

**COLOURS**

Denim (BDAD)

**SIZES**

Modern Fit  
72 - 112R  
87 - 117S

**FABRIC**

83% Cotton, 16% Polyester, 1% Spandex Denim Terry 265gsm



7 reinforced wider and stronger belt loops

Mobile and pen pocket on right hand side leg

Durable stretch knit denim terry for superior comfort and movement

Double layered knee for durability



Two angled side pockets

Two back welt pockets

Cordura® highlights at high abrasive areas for extra durability

Two oversized cargo pockets with Cordura® reinforcements for durability

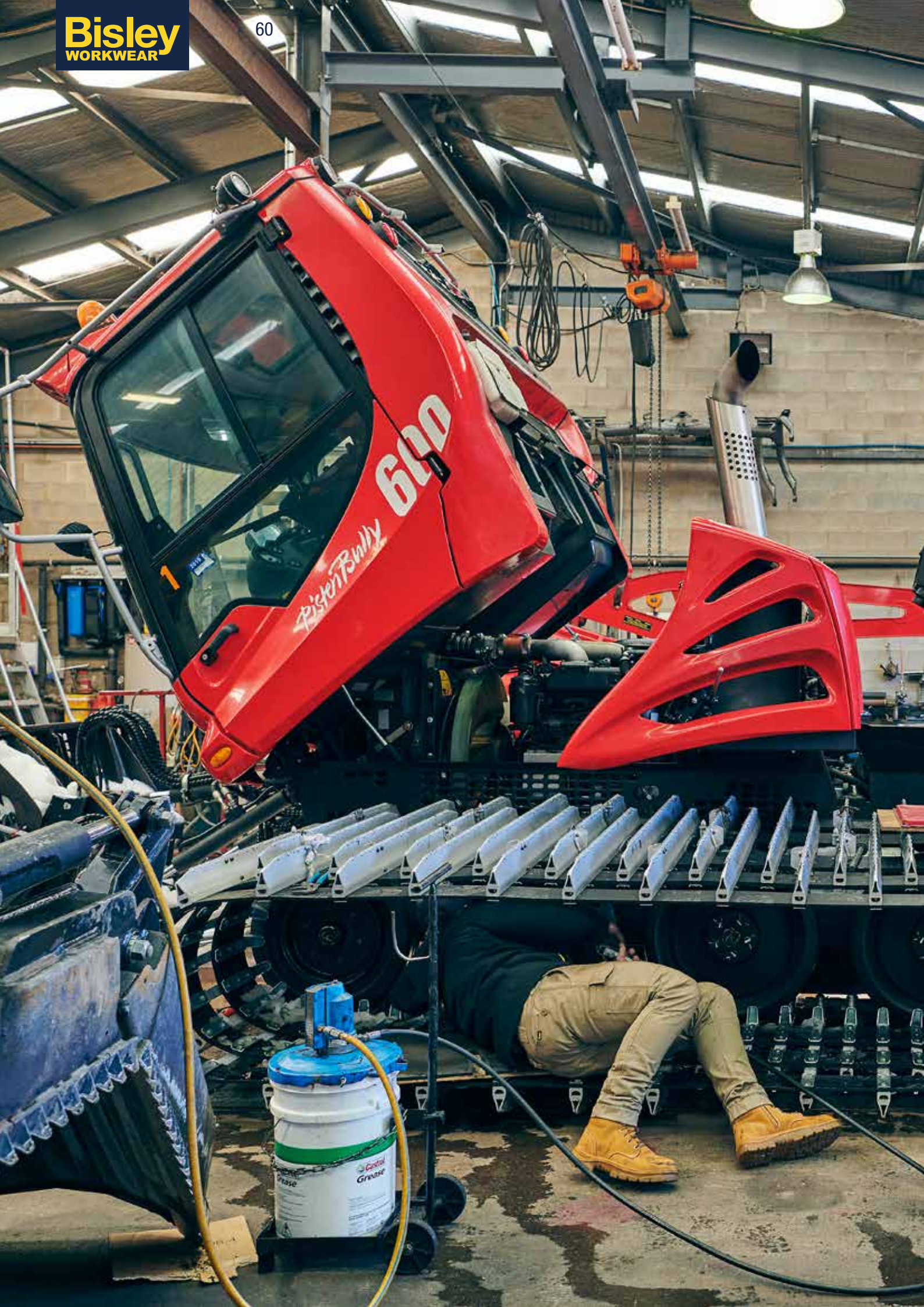
Heavy gauge thread and reinforced stitching

Cuffed stovepipe style

**INNOVATION****FIRST OF ITS KIND**

COTTON RICH, LIGHTWEIGHT,  
KNIT DENIM FABRIC











# INDEX

## 08 JUMPERS



BK6924	BK6924	BK6924	BK6925	BK6925	BK6925	BK6987T	BK6987T	BK6988T
Black	Navy	Charcoal	Black	Navy	Charcoal	Yellow/Navy	Orange/Navy	Yellow/Navy
Page 10	Page 10	Page 10	Page 11	Page 11	Page 11	Page 12	Page 12	Page 13

## 16 JACKETS



BK6988T	BK6983	BK6983	BJ6960	BJ6960	BJ6979T	BJ6979T	BJ6350HT	BJ6350HT
Orange/Navy	Grey Marle	Charcoal Marle	Black	Navy	Yellow	Orange	Yellow	Orange
Page 13	Page 15	Page 15	Page 18	Page 18	Page 21	Page 21	Page 23	Page 23



BJ6730	BJ6730	BJ6730T	BJ6730T	BJ6976	BJ6829T	BJ6829T	BJ6943	BJ6937
Yellow/Navy	Orange/Navy	Yellow/Navy	Orange/Navy	Black	Yellow/Navy	Orange/Navy	Black	Charcoal
Page 26	Page 26	Page 27	Page 27	Page 29	Page 32	Page 32	Page 34	Page 37





## 40 PANTS

**BP6008**

Black

Page 44

**BP6008**

Navy

Page 44

**BP6008**

Khaki

Page 44

**BP6008**

Bottle

Page 44

**BP6008T**

Navy

Page 45

**BPC6008**

Black

Page 48

**BPC6008**

Navy

Page 48

**BPC6008**

Khaki

Page 48

**BPC6008**

Bottle

Page 48

**BPC6008T**

Navy

Page 51

**BPC6028**

Black

Page 52

**BPC6028**

Navy

Page 52

**BPC6028**

Stone

Page 52

**BPC6028T**

Navy

Page 55

**BPC6334**

Black

Page 56

**BPC6334**

Navy

Page 56

**BPC6334**

Stone

Page 56

**BPC6334**

Charcoal

Page 56

**BPC6334T**

Navy

Page 58

**BPC6335**

Denim

Page 59





# JOB DONE.

**BISLEY GLOBAL HEAD OFFICE**

Level 5, 163-175 O'Riordan Street  
Mascot, NSW, 2020 Australia

**T** 1300 BISLEY (247 539)

**F** 02 9475 0333

**E** [orders@bisleyworkwear.com.au](mailto:orders@bisleyworkwear.com.au)

**BISLEY WESTERN AUSTRALIA**

36A Tomah Road,  
Welshpool, WA, 6106 Australia

**T** 1300 BISLEY (247 539)

**F** 02 9475 0333

**E** [orders.wa@bisleyworkwear.com.au](mailto:orders.wa@bisleyworkwear.com.au)

**BISLEY NEW ZEALAND**

5 Tiri Place,  
Mt Wellington, Auckland, 1642 New Zealand

**T** 0800 142 722

**F** 09 3550 313

**E** [orders@bisleyworkwear.co.nz](mailto:orders@bisleyworkwear.co.nz)